

2015

VINAYAK INTERNATIONAL

Contact Details :-

TEL :- +91- 161- 3232517

FAX:- +91- 161- 2512517

E-MAIL :-

sales@vinayakinternational.in

info@vinayakinternational.in

Barb Arm Standard – Pressed Steel



Code	Description
VBA - 001	1 5/8" - 1 5/8"
VBA - 002	2" - 1 5/8"
VBA - 003	2 1/2" - 1 5/8"
VBA - 004	3" - 1 5/8"

Barb Arm Vertical



Code	Description
VBA - 005	1 5/8" - 1 5/8"
VBA - 006	2" - 1 5/8"
VBA - 007	2 1/2" - 1 5/8"

Barb Arm – 6 Wire



Code	Description
VBA - 008	2" - 1 5/8"
VBA - 009	2 1/2" - 1 5/8"
VBA - 010	3" - 1 5/8"

Brace Band - Regular 3 / 4" x 12Ga.



Code	Description
VBB - 001	1 3/8"
VBB - 002	1 5/8"
VBB - 003	2"
VBB - 004	2 1/2"
VBB - 005	3"
VBB - 006	3 1/2"
VBB - 007	4"
VBB - 008	4 1/2"
VBB - 009	6 5/8"
VBB - 010	8 5/8"

Brace Band - Beveled 7 / 8" x 12Ga.



Code	Description
VBB - 011	1 3/8"
VBB - 012	1 5/8"
VBB - 013	2"
VBB - 014	2 1/2"
VBB - 015	3"
VBB - 016	3 1/2"
VBB - 017	4"
VBB - 018	4 1/2"
VBB - 019	6 5/8"
VBB - 020	8 5/8"

Tension Band – Regular 3 / 4" x 14Ga.



Code	Description
VTB - 001	1 3/8"
VTB - 002	1 5/8"
VTB - 003	2"
VTB - 004	2 1/2"
VTB - 005	3"
VTB - 006	3 1/2"
VTB - 007	4"
VTB - 008	4 1/2"
VTB - 009	6 5/8"
VTB - 010	8 5/8"

Tension Band – Beveled 7 / 8" x 12Ga.



Code	Description
VTB - 011	1 3/8"
VTB - 012	1 5/8"
VTB - 013	2"
VTB - 014	2 1/2"
VTB - 015	3"
VTB - 016	3 1/2"
VTB - 017	4"
VTB - 018	4 1/2"
VTB - 019	6 5/8"
VTB - 020	8 5/8"

Loop Caps - Pressed Steel



Code	Description
VLC - 001	1 5/8" - 1 5/8"
VLC - 002	1 5/8" - 1 3/8"
VLC - 003	2" - 1 3/8"
VLC - 004	2" - 1 5/8"
VLC - 005	2 1/2" - 1 5/8"
VLC - 006	3" - 1 5/8"
VLC - 007	3 1/2" - 1 5/8"
VLC - 008	4" - 1 5/8"

Loop Cap with Acorn - Die Cast Aluminum



Code	Description
VLC - 009	1 5/8" - 1 3/8"
VLC - 010	2" - 1 3/8"
VLC - 011	2" - 1 5/8"
VLC - 012	2 1/2" - 1 5/8"

Loop Cap without Acorn - Die Cast Aluminum



Code	Description
VLC - 013	1 5/8" - 1 3/8"
VLC - 014	2" - 1 3/8"
VLC - 015	2" - 1 5/8"
VLC - 016	2 1/2" - 1 5/8"

Offset Rail End – Pressed Steel



Code	Description
VRE - 001	1 3/8"
VRE - 002	1 5/8"
VRE - 003	2"

Combo Rail End – Pressed Steel – 2 Hole



Code	Description
VRE - 004	1 5/8"

Die Cast Aluminum – Rail End



Code	Description
VRE - 005	1 3/8"
VRE - 006	1 5/8"

Rail End – Half Moon – Pressed Steel



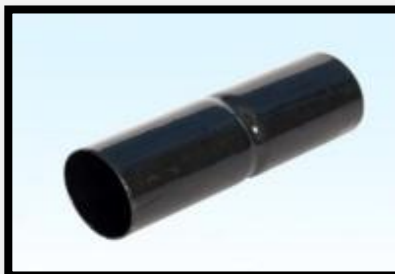
Code	Description
VRE - 009	1 5/8"
VRE - 008	2"

Rail End Combo – Semi Steel



Code	Description
VRE - 009	1 5/8"

Sleeves



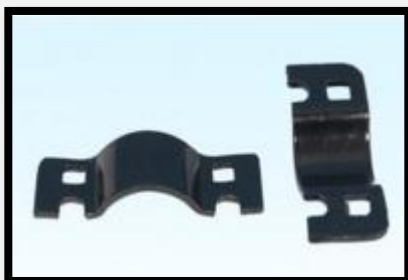
Code	Description
VSL - 001	1 3/8" - 6"
VSL - 002	1 5/8" - 6"
VSL - 003	1 5/8" - 7"

Sleeves – Oversized



Code	Description
VSL - 004	(0301) 1 5/8" - 6"

Collars – Pressed Steel



Code	Description
VCO - 001	1 3/8"
VCO - 002	1 5/8"
VCO - 003	2"

Forks – Pressed Steel



Code	Description
VFO - 001	1 3/8"
VFO - 002	2"
VFO - 003	2 1/2"
VFO - 004	3"
VFO - 005	4"

Line Rail Clamp (LRC, Boulevard)



Code	Description
VSL - 001	1 3/8" - 1 3/8"
VSL - 002	1 5/8" - 1 3/8"
VSL - 003	1 5/8" - 1 5/8"
VSL - 004	2" - 1 3/8"
VSL - 005	2" - 1 5/8"
VSL - 006	2" - 2"
VSL - 007	2 1/2" - 1 5/8"
VSL - 008	3" - 1 5/8"
VSL - 009	3 1/2" - 1 5/8"
VSL - 010	4" - 1 5/8"
VSL - 011	6 5/8" - 1 5/8"

Male Hinge - Pressed Steel



Code	Description
VHI - 001	1 3/8"
VHI - 002	1 5/8"
VHI - 003	2"
VHI - 004	2 1/2"
VHI - 005	3"

Female Hinge - Pressed Steel



Code	Description
VHI - 006	1 3/8" - 1 5/8"
VHI - 007	1 5/8" - 1 5/8"
VHI - 008	2" - 1 5/8"

Kennel Clamp



Code	Description
VKC - 001	1 3/8" - 1 3/8" 12 Ga.

End Rail Clamp (ERC, Gate T)



Code	Description
VRC - 001	1 3/8" - 1 3/8" (3 Hole)

M/ s. VINAYAK INTERNATIONAL

INDUSTRIAL AREA C

JASPAL BANGAR ROAD

LUDHIANA, INDIA

TEL :- +91- 161- 3232517

FAX:- +91- 161- 2512517

E-MAIL :- sales@vinayakinternational.in

info@vinayakinternational.in